



High current driving power meets crystal-clear source-reproduction technology in a state-of-the-art A/V hub that's built to share Hi-Fi audio all around the home.

ADVANCED FEATURES

- Supports DTS:X™*1 and Dolby Atmos® Formats Up to 5.1.2 Channels
- 4K / 60 Hz-Capable HDMI® Terminals Supporting High Dynamic Range (HDR), 4:4:4 Color Space, BT.2020, and HDCP 2.2 for UltraHD Entertainment*2
- 8 HDMI Inputs (1 Front / 7 Rear) and 2 Outputs
- Chromecast built-in*1, AirPlay, Wi-Fi®, and Bluetooth Version 4.1 (Compatible Profile: A2DP v1.2, AVRCP v1.3) for App-based Wireless Audio Streaming
- Internet Radio and Music Streaming Subscription Services Included (TuneIn Radio, Pandora®, Spotify, and TIDAL™)*3
- FlareConnect™*4 Multi-room Network and Analog Wireless Audio Distribution to Compatible Components and Speakers
- AccuEQ Room Calibration Featuring AccuReflex Phase-Alignment Technology for Object-based Sound (Mic Included)
- AK4458 384 kHz / 32-bit DAC (8 Channels x 1)
- 32-bit Digital Signal Processing Engine
- Discrete Output Stage Circuitry
- Hand-selected Audio-tuned Parts to Ensure Low-Impedance, High Current Performance
- VLSC™ Technology for Noise-free Signal Path
- PLL (Phase Locked Loop) Jitter-Cleaning Circuit Technology for S/PDIF Audio
- Graphical Overlaid OSD via HDMI with Quick Set-Up and Home Menu
- Play Compressed, Lossless, and Hi-Res Audio via Local Network and USB (MP3, WMA, FLAC, WAV, AAC, Apple Lossless, DSD 5.6 MHz, and Dolby® TrueHD)
- Advanced Music Optimizer to Improve Compressed Digital Audio Quality
- Control and Stream with Free Integra Remote Apps for iPod touch® / iPhone®*4 and Android™ Devices*5
- Bi-Amping Capability for Front Channels
- 4 DSP Modes for Gaming: Rock, Sports, Action, and RPG
- Hybrid Standby Function with HDMI Passthrough

*1 Enabled via firmware update. Further details will be communicated on our website and in other media at a later date. *2 6G 4:4:4 video and HDCP 2.2 is supported on HDMI inputs 1-3, Main Out, and Sub Out. *3 Availability of services depends on region. Some services may require a paid subscription and firmware update. Availability of third-party services advertised here is accurate at the time of publication, but may be subject to change without notice. *4 Compatible with iPod touch (3rd generation or later) and iPhone 3GS or later. All models require iOS 4.2 or later. *5 Requires Android 2.1 or later.

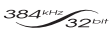
OTHER FEATURES

- 170 Watts per Channel at 6 Ohms, 1 kHz, 0.9% THD, FTC
- 100 Watts per Channel at 8 Ohms, 20 Hz-20 kHz, 0.08% THD, 2 Channels Driven, FTC
- H.C.P.S. (High Current Power Supply) Massive High Power Transformer
- Mass Storage Class USB Memory Playback Capability
- CinemaFILTER™ Technology to Restore The Correct Tonal Balance of Movie Soundtracks
- Independent Crossover Adjustment for Each Channel (40 / 45 / 50 / 55 / 60 / 70 / 80 / 90 / 100 / 110 / 120 / 130 / 150 / 180 / 200 Hz)
- A/V Sync Control (-100 ms to +500 ms in 1 ms Steps at 48 kHz)
- Direct Mode
- Component Video Switching (2 Inputs)
- 3 Composite Video Inputs (2 Rear and 1 Front)
- 3 Digital Audio Inputs (2 Optical and 1 Coaxial)
- 8 Analog Audio Inputs (7 Rear, 1 Front)
- Phono Input (MM) for Turntable Connection
- 7.2 Multichannel Pre Outs
- Tone Control (Bass / Treble) for Front L / R Channels
- 40 FM / AM and 40 Internet Radio Station Presets
- Firmware Updates via Ethernet and USB

CUSTOM INTEGRATION FEATURES

- Powered Zone 2 and Zone 2 Pre / Line-Out Distributed Audio Playback in Another Room
- Bi-Directional Ethernet and RS232 Port for Control
- Independent Zone 2 Tone Control (Bass / Treble)
- Zone 2 DAC for SPDIF (PCM), NET, and USB Sources
- Max Power / Power On Volume Settings for Main Zone and Zone 2
- Dealer Settings Memory Store and Recall with Lock / Unlock and PC Software Support
- 2 IR Inputs and 1 Output
- 3 Programmable 12 V Triggers (with Adjustable Delay)
- Optional Rack Mount Kit Available (IRK-155-3C or IRK-155-3D)
- Smart Grid-ready
- RIHD (Remote Interactive Over HDMI) for System Control*

*Compatibility depends on respective model.



NETWORK



PANDORA

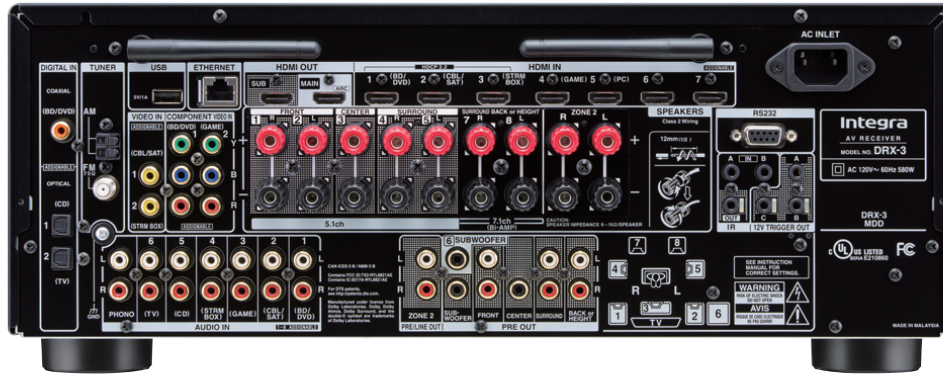


USB

RIHD



ECO



SPECIFICATIONS

AMPLIFIER SECTION

Power Output
All Channels : 100 W/ch at 8 Ohms, 20 Hz–20 kHz, 0.08% THD, 2 Channels Driven, FTC
170 W/ch at 6 Ohms, 1 kHz, 0.9% THD, FTC

Dynamic Power : 240 W (3 Ohms, Front)
210 W (4 Ohms, Front)
120 W (8 Ohms, Front)

THD+N (Total Harmonic Distortion + Noise) : 0.08% (20 Hz–20 kHz, Half Power)

Input Sensitivity and Impedance : 200 mV / 47 k-Ohms (Line)
3.5 mV / 47 k-Ohms (Phono MM)

Rated RCA Output Level and Impedance : 200 mV / 2.3 k-Ohms (Zone Line Out)
1 V / 470 Ohms (Subwoofer Pre Out)
2.0 V / 2.3 k-ohms (Zone Pre Out)

Phono Overload : 70 mV (MM 1 kHz, 0.5%)

Frequency Response : 5 Hz–100 kHz / +1 dB, -3 dB (Direct)

Tone Control : ±10 dB, 90 Hz (Bass)
±10 dB, 7.5 kHz (Treble)

Signal-to-Noise Ratio : 106 dB (Line, IHF-A)
80 dB (Phono)

Speaker Impedance : 6 Ohms–16 Ohms

VIDEO SECTION

Input Sensitivity / Output Level and Impedance : 1.0 Vp-p / 75 Ohms (Component Y)
0.7 Vp-p / 75 Ohms (Component Pb / Cs, Pr / Cr)
1.0 Vp-p / 75 Ohms (Composite)

TUNER SECTION

Tuning Frequency Range : FM 87.5 MHz–107.9 MHz
AM 530 kHz–1,710 kHz

FM / AM Preset Memory : 40 stations

GENERAL

Power Supply : AC 120 V~, 60 Hz

Power Consumption : 580 W

Stand-by Power Consumption : 0.1 W

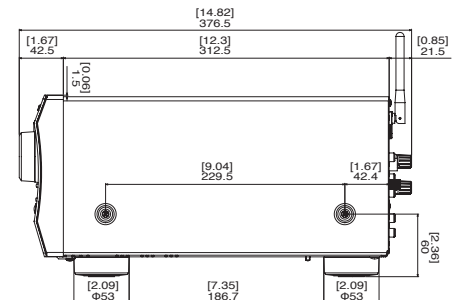
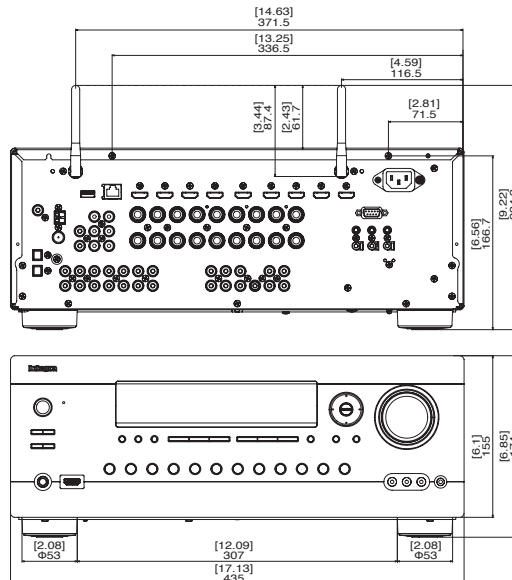
Dimensions (W x H x D) : 17 1/8" x 6 7/8" x 14 13/16"
(435 x 174 x 376.5 mm)

Weight : 23.1 lbs. (10.5 kg)

CARTON

Dimensions (W x H x D) : 22 7/16" x 11 3/4" x 18 7/16"
(570 x 298 x 469 mm)

Weight : 29.8 lbs. (13.5 kg)



Due to a policy of continuous product improvement, Integra reserves the right to change specifications and appearance without notice. Manufactured under license from Dolby Laboratories. Dolby, Dolby Atmos, Dolby Surround, and the double-D symbol are trademarks of Dolby Laboratories. For DTS patents, see <http://patents.dts.com>. Manufactured under license from DTS, Inc. DTS, the Symbol, DTS in combination with the Symbol, the DTS-HD logo, and DTS-HD Master Audio are registered trademarks or trademarks of DTS, Inc. in the United States and/or other countries. © DTS, Inc. All Rights Reserved. HDMI, the HDMI logo, and High-Definition Multimedia Interface are trademarks or registered trademarks of HDMI Licensing LLC in the United States and other countries. The Bluetooth® word mark and logos are owned by the Bluetooth SIG, Inc. AirPlay, iPad, iPhone, and iPod touch are trademarks of Apple Inc., registered in the U.S. and other countries. iPad Air and iPad mini are trademarks of Apple Inc. "Made for iPod", "Made for iPhone" and "Made for iPad" mean that an electronic accessory has been designed to connect specifically to iPod, iPhone, or iPad, respectively, and has been certified by the developer to meet Apple performance standards. Apple is not responsible for the operation of this device or its compliance with safety and regulatory standards. Please note that the use of this accessory with iPod, iPhone or iPad may affect wireless performance. AirPlay works with iPhone, iPad, and iPod touch with iOS 4.3.3 or later, Mac with OS X Mountain Lion or later, and PC with iTunes 10.2.2 or later. Android, Chromecast is a trademark of Google Inc. Products displaying the Hi-Res Audio logo conform to the Hi-Res Audio standard as defined by Japan Audio Society. The Hi-Res Audio logo is used under license from Japan Audio Society. FlareConnect, VCC, AccuEQ, Music Optimizer, CinemaFILTER, and Theater-Dimensional are trademarks of Onkyo Corporation. All other trademarks and registered trademarks are the property of their respective holders.